

T-SERIES

INTEGRATED TELECOM **FUEL CELL** SOLUTIONS

- Cost savings over diesel power, even while reducing carbon output
- Remotely accessible for real-time control & monitoring
- Anti-theft solution (fuel source does not have a resale value)
- Optional extended-run / auxiliary fuel tank cabinets

APPLICATIONS

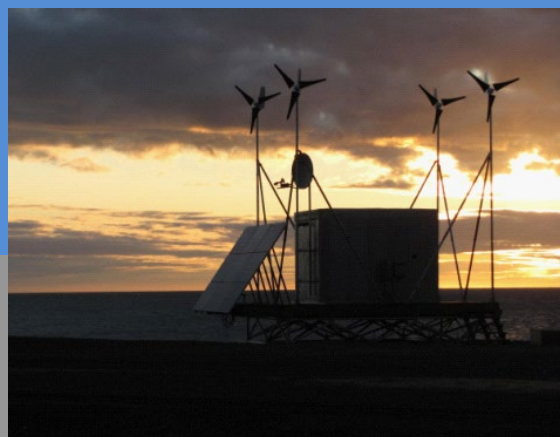
- Telecom UPS
- Remote Monitoring
- Rail & Signals
- Marine
- Government
- Security & Surveillance
- Remote Area Power

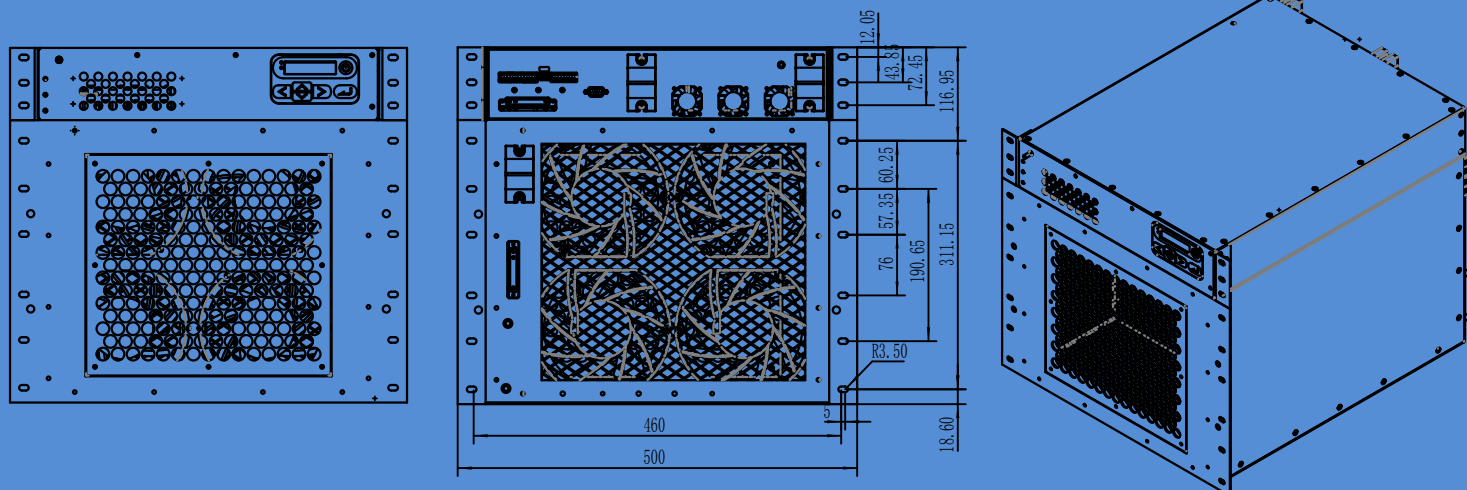


**Cabinet and cylinder not included*

- Quiet Operation, Clean Power
- Lower Energy Cost, Lower Maintenance

- No carbon monoxide, NOx or SOx emissions
- Can be hybridized with solar or wind power





MODEL	T-1000	T-3000	T-5000
Power Rating	0 to 1KW @ 20°C at 101.3 kPa	0 to 3KW @ 20°C at 101.3 kPa	0 to 5KW @ 20°C at 101.3 kPa
Current Rating	0 to 19A @54V	0 to 56A @54V	0 to 47A *2 @54V
OPERATION			
Voltage Adjustable	43.2 to 57.6 Vdc		
Voltage ripple	± 1V		
Altitude De-rating	3.5% per 500m over 1,000m		
Temperature De-rating	1.25% per °C over 40°C		
Standby Power Consumption	Approximately<3% at peak power (DC)		
Reactants	Hydrogen and Air		
Cooling	Air (integrated cooling fan)		
H2 inlet pressure	0.55-0.75bar		
Hydrogen purity	≧ 99.995% dry H2		
Consumption	≧ 0.78 Nm3/kWh (Average at max. load)		
Start up time	≧ 2minute at ambient temperature		
Efficiency of stack	≧ 42% at peak power		
Max noise	Normal operation: <70 dBa at 1.5 meters		
FOOTPRINT			
Controller Dimension (WxDxH)	430mm x 550mm x 150mm	430mm x 550mm x 150mm	(430mm x 550mm x 150mm)*2
Stack Dimension (WxDxH)	430mm x 382mm x 267mm	430mm x 550mm x 356mm	(430mm x 550mm x 356mm)*2
Controller Weight	10 kg	15 kg	15*2 kg
Stack Weight (with accessory and case)	18 kg	40.3 kg	40.3*2 kg
ENVIRONMENT CONDITION			
Ambient temperature	-10°C to + 45°C Standard (winter kit needed when temperature is below 0°C,during operation)		
Recommended cold start temp	Above 5° C		
Relative Humidity	0 - 95% Non - Condensing		
Storage Temperature	- 20° C to + 50° C Standard		
COMMUNICATION			
Communications	RS485 or RS232		